

OUR PATH FORWARD

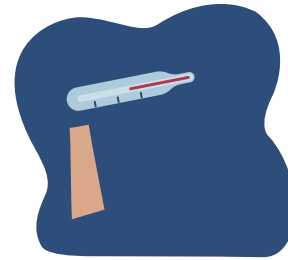
Protecting ourselves, each other, our customers and our communities

As part of our path forward, we need to continue to reinforce steps that protect ourselves, each other, our customers and our communities. These include the following priority areas:

1. Wellness Checks, Time Off & Contact Tracing
2. Personal Protective Equipment (PPE)
3. Social Distancing
4. Workplace Hygiene
5. Business Travel and Meetings

We have detailed many aspects of these priorities throughout our operating procedures and will continue to do so. All team members should

IR OORZ WKHVH ZKHQ LQ WKH ²HOG 7KH information addresses all team members.



PROTOCOL 3: Social Distancing

- First, where feasible, we will continue to leverage telework (remote) opportunities
- All CSC properties will survey the physical space, protocols and habits to assess and enhance the ability to maintain foot distancing throughout the day.
- All interactions (meetings) should be limited to small groups (5 or less) and conducted in large rooms while the use of common gathering areas is minimized or eliminated.

